



EAST CLAYDON TO BICESTER 132kV CABLE INSTALLATION

Client	Scottish & Southern Electricity
Project & Location	East Claydon to Bicester
Duration	Start: July 2017 Completion: October 2018
Infrastructure Requirement	Network Reinforcement
Scope of Works	<ul style="list-style-type: none"> ▪ Turnkey solution ▪ TWD, civils & reinstatement ▪ Urban and rural installations ▪ Substation construction ▪ Testing & commissioning ▪ Complex stakeholder management

PROJECT OVERVIEW

A dual 132kV circuit underground cable installation of circa 18km between the National Grid 400/132kV East Claydon substation and new SSEN 132/33kV substation located in Bicester, adjacent to Bicester airfield. The route comprised of 18 sections (17 joint bays) with Instalcom successfully installing an individual cable circuit lengths of 1,220m. Instalcom provided SSEN with a complete civils and cable installation solution, to include the substation construction and cable jointing works.

The project also included the testing and commissioning of the new fully ducted 132kV 630mm² aluminium conductor / aluminium sheath underground cables. A particular challenge for the Instalcom Project Management and Delivery Teams was the interface with numerous stakeholders which included up to 28 landowners, National Grid and Network Rail, which was successfully completed through collaboration with our client SSEN through the development and implementation of a project specific Stakeholder Management Plan aligned to our BS11000 collaborative approach. The works included several areas of Special Engineering Difficulty (SED) which Instalcom overcame by using their in-house trenchless installation teams to design and install multiple crossing using Horizontal Directional Drilling (HDD) techniques.

DELIVERY & INNOVATION

- Instalcom appointed as Principal Contractor
- Instalcom responsible for civils route and temporary works designs
- Instalcom adopted collaborative approach in working with SSEN key stakeholders
- Instalcom implemented safety behavioural programme initiative 'Mindset'
- Network reinforcement works completed safely, on time and to budget by the agreed date with SSEN and National Grid

KEY CHALLENGES

- Programme & outage dates
- Interface with multiple stakeholders
- Vehicle access and egress
- Restricted plant movements
- Maintaining stakeholder access
- Special Engineering Difficulties
- Working at height
- Site conditions & logistics
- Out of hours security

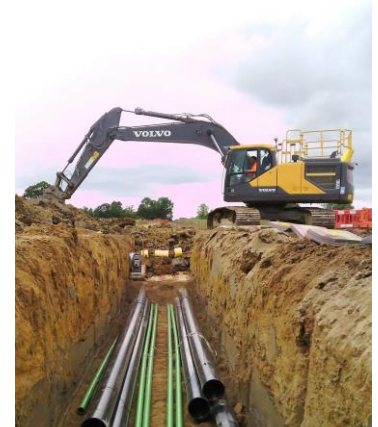


EAST CLAYDON TO BICESTER 132kV

Instalcom Ltd

PROJECT KPIs

- Achieved ZERO harm
- No Environmental incidents
- Full compliance with Technical Specifications and high quality engineering
- Compliance with Programme milestone dates
- Proactive communications with stakeholders and third parties resulting in positive interactions and outcomes
- Exceeded Customer Care expectations
- Successful brand promotion of SSEN, National Grid and Network Rail
- Common protocols embraced leading to enhanced Instalcom / SSEN relationship



CONTACT US

Want to know more about the Instalcom infrastructure service offering in the following sectors:-

- Power
- Water
- Telecoms
- Rail
- Gas
- Multi-Utilities
- Trenchless Installations

Contact us at:-

Instalcom Ltd
Borehamwood Industrial Park
Rowley Lane
Borehamwood
Hertfordshire WD6 5PZ
T: 020 8731 4600
info@instalcom.co.uk
www.instalcom.co.uk



Part of OCU Group

Delivering Today for Tomorrow

