



<b>Client</b>	Scottish & Southern Electricity Networks
<b>Project</b>	Fugglestone 132kV, Salisbury
<b>Duration</b>	Start: August 2018 Completion: December 2018
<b>Infrastructure Requirement</b>	Network Diversion
<b>Scope of Works</b>	<ul style="list-style-type: none"> <li>• Turnkey solution</li> <li>• TWD, civils &amp; reinstatement</li> <li>• OHL, steel tower, cable installation &amp; jointing</li> <li>• Testing &amp; commissioning</li> <li>• Dismantle &amp; disposal of assets</li> </ul>

## PROJECT OVERVIEW

A dual 132kV circuit overhead lines traversed a property on which Developer Persimmon were constructing residential and commercial premises. To facilitate this work, Instalcom were contracted to underground a section of the overhead lines. New terminal towers DD05R and DD08R were erected, and the overhead line was replaced by 132kV dual circuit underground cables of circa 1.1km.

Instalcom provided SSEN with a complete turnkey solution which included; cable system design, supply of cables and accessories, fabrication and erection of two new steel towers, civil works, cable installation, jointing and terminations onto the newly formed terminal towers. The works also included the testing and commissioning of the new fully ducted 132/76kV 1000mm<sup>2</sup> aluminium conductor / aluminium sheath underground cables.

Scope also included the dismantlement and disposal of the redundant assets and specifically the overhead line towers and conductors, which were lifted by crane, dragged to a central point and cut into sections for controlled disposal off site. The existing foundation was removed to a depth of 0.6m below ground level. The asset removal included the associated fittings and earthing as required under the project Design intent Document (DiD).

## DELIVERY & INNOVATION

- Instalcom appointed as Principal Contractor
- Instalcom developed project Design Intent Document (DiD)
- Instalcom adopted collaborative approach in working with SSEN and Persimmon
- Instalcom implemented safety behavioural programme initiative 'Mindset'
- Diversion works completed safely, on time and to budget ahead of the agreed date with SSEN and Persimmon

## KEY CHALLENGES

- Programme & outage dates
- Interface with multiple stakeholders
- Vehicle access and egress
- Restricted plant movements
- Maintaining stakeholder access
- Protection of livestock
- Working at height
- Site conditions & logistics
- Out of hours security

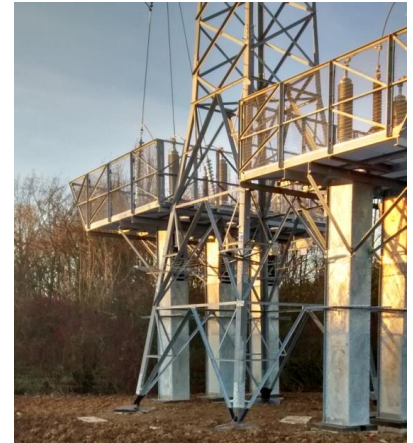


# FUGGLESTONE 132kV UNDERGROUNDING

Instalcom Ltd

## PROJECT KPIs

- Achieved ZERO harm
- No Environmental incidents
- Full compliance with Technical Specifications and high quality engineering
- Compliance with Programme milestone dates
- Proactive communications with stakeholders and third parties resulting in positive interactions and outcomes
- Exceeded Customer Care expectations
- Successful brand promotion of SSEN and Persimmon
- Common protocols embraced leading to enhanced Instalcom / SSEN relationship



## CONTACT US

Want to know more about the Instalcom infrastructure service offering in the following sectors:-

- Power
- Water
- Telecoms
- Rail
- Gas
- Multi-Utilities
- Trenchless Installations

Contact us at:-

Instalcom Ltd  
Borehamwood Industrial Park  
Rowley Lane  
Hertfordshire WD6 5PZ  
T: 020 8731 4600  
info@instalcom.co.uk  
www.instalcom.co.uk



OCU Group Ltd

## Delivering Today for Tomorrow

