



11/33kV Substation Construction

Client

Western Power Distribution (WPD)

Project & Location

East Coast Low Carbon Hub

Duration

Start: November 2017

Completion: March 2018

Approx. Value

£275k

Scope of Works

- 2no. 33/11kV Transformer Foundations with NER's
- Access Road and Site Surfacing
- P/C Ducting, M/C Ducting and Drainage.
- Construction of 11kV Switchroom

PROJECT OVERVIEW

Instalcom was appointed by WPD as Principal Contractor to design and construct 2 x new 33/11kV transformer bunds and NER plinths. To facilitate this work, Instalcom were contracted to construct a new 11kV control/switchroom, install duct routes for 33kV, 11kV and multi core cables, complete the package substation foundations, install the below ground earthing, compound fencing, gates and site surfacing. The scope included the general building services comprising of heating, lighting, dehumidification and cable management systems.

DELIVERY & INNOVATION

- Instalcom appointed as Principal Contractor.
- Works were completed safely, on time and to budget.
- Instalcom adopted a collaborative approach in working with WPD and their other contractors appointed to the works. Including Original Equipment Manufacturers (OEM's)
- Instalcom implemented a safety behavioural programme initiative 'mindset'.

KEY CHALLENGES

- Interface with multiple stakeholders
- Restricted plant movements
- High Water Table
- Working In Remote Area
- Outage constraint for completion
- Immediate Commencement on site

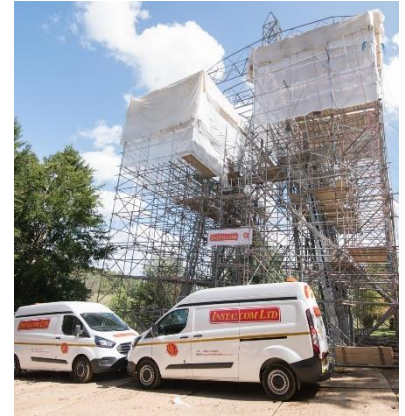


11/33kV Substation Construction.

Instalcom Ltd

PROJECT KPIs

- Achieved ZERO harm.
- No Incidents.
- Full compliance with technical specifications and high-quality engineering.
- Full Compliance with Programme Milestone Dates.
- Exceeding Customer Care Expectations.
- Proactive communication with stakeholders and third parties.



CONTACT US

Want to know more about the Instalcom infrastructure service offering in the following sectors:-

- Power
- Water
- Telecoms
- Rail
- Gas
- Multi-Utilities
- Trenchless Installations

Contact us at:-

Instalcom Ltd
Borehamwood Industrial Park
Rowley Lane
Borehamwood
Hertfordshire WD6 5PZ
T: 020 8731 4600
info@instalcom.co.uk
www.instalcom.co.uk



Delivering Today for Tomorrow

