



Client	SMBjv
Project & Location	Faringdon to Blunsdon Trunk Main
Duration	Start: October 2018 Completion: November 2018
Infrastructure Requirement	Trunk Main Replacement
Scope of Works	<ul style="list-style-type: none"> 2.8km of 1200HDE main 3 x 600mm Ductile Iron connections to existing mains and connect to existing assets 35m x 1200mm dia pipe jack under the River Cole & insert 900mm welded steel pipe

PROJECT OVERVIEW

Instalcom successfully completed the replacement of a 2.8km section of the existing 900mm GRP clean water trunk main near Highworth with a 1200mm High Density Polyethylene (HDPE) pipe laid parallel to the existing main across agricultural lands.

The original scope of works included the entire circa 16km length of pipe between Faringdon Water Booster Station and Blunsdon reservoir, however for budgetary reasons, this scope was downsized to 2.8km. The remaining section of pipeline will be replaced under AMP7.

The majority of the installation was via open cut at an average depth of 2.5m to accommodate several ditch crossings, a 35m pipe jack was carried out under the River Cole at a depth of 7m with a 900mm welded steel pipe inserted in the tunnel.

Three connections were made to the existing mains two of which posed extreme high risk to the continuity of supply to Blunsdon Reservoir and ultimately Swindon. With detailed planning and coordination all tie-ins were carried out.

DELIVERY & INNOVATION

- Self-delivery of all aspects of butt fusion and ditching
- Use of a 48”Roli cradle and 50t excavator for handling of pipe strings
- Use of excavator mounted “Laser catcher” for control of dig levels
- Weekly co-ordination meetings with Thames Water Operation teams
- Development and maintenance of “Handover Matrix” with SMBjv & Thames Water

KEY CHALLENGES

- Working on a flood plain in winter
- 24hr working on essential assets
- Working on existing mains 900mm GRP & 700 AC
- Pipe Jacking under watercourse
- Butt fusion of 1200HDPE pipe including 24hr work
- Open cut excavations up to 3.5m deep
- Ditching 1200 dia. Strings up to 500m

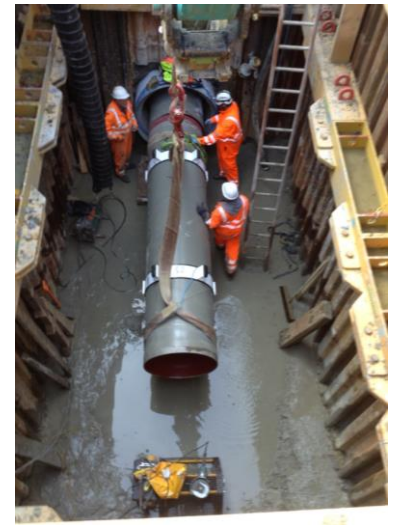


Faringdon to Blunsdon Trunk Main

Instalcom Ltd

PROJECT KPIs

- Achieved ZERO Harm
- No Environmental incidents
- 100% IFE attendance for site personnel on site longer than 4 weeks
- Weekly leadership Safety Tours
- In excess of 100 Positive Interventions per month (<10 per 500 hrs worked)
- Handover submissions on an ongoing 2 weeks basis as works progress



CONTACT US

Want to know more about the Instalcom infrastructure service offering in the following sectors:-

- Power
- Water
- Telecoms
- Rail
- Gas
- Multi-Utilities
- Trenchless Installations

Contact us at:-

Instalcom Ltd
Borehamwood Industrial Park
Rowley Lane
Hertfordshire WD6 5PZ
T: 020 8731 4600
info@instalcom.co.uk
www.instalcom.co.uk



Part of OCU Group

Delivering Today for Tomorrow

